

DIGESTION AND CIRCULATION

STUDY GUIDE



I. Define the following terms:

a) Ingestion

e) Enzymes

b) Gastrointestinal Tract

f) Mechanical Digestion

c) Bolus

g) Chemical Digestion

d) Chyme

II. All the body parts in the Digestive System play a different role in the digestive process. List the functions of each body part in the table below.

Body Part	Function
Liver	
Appendix	
Gallbladder	
Pancreas	
Salivary Glands	
Mouth	
Esophagus	
Stomach	

Small Intestine	
Large Intestine	
Anus	

III. In the table below, describe the function of each type of blood vessel.

Blood Vessel	Function
Veins	
Arteries	
Capillaries	

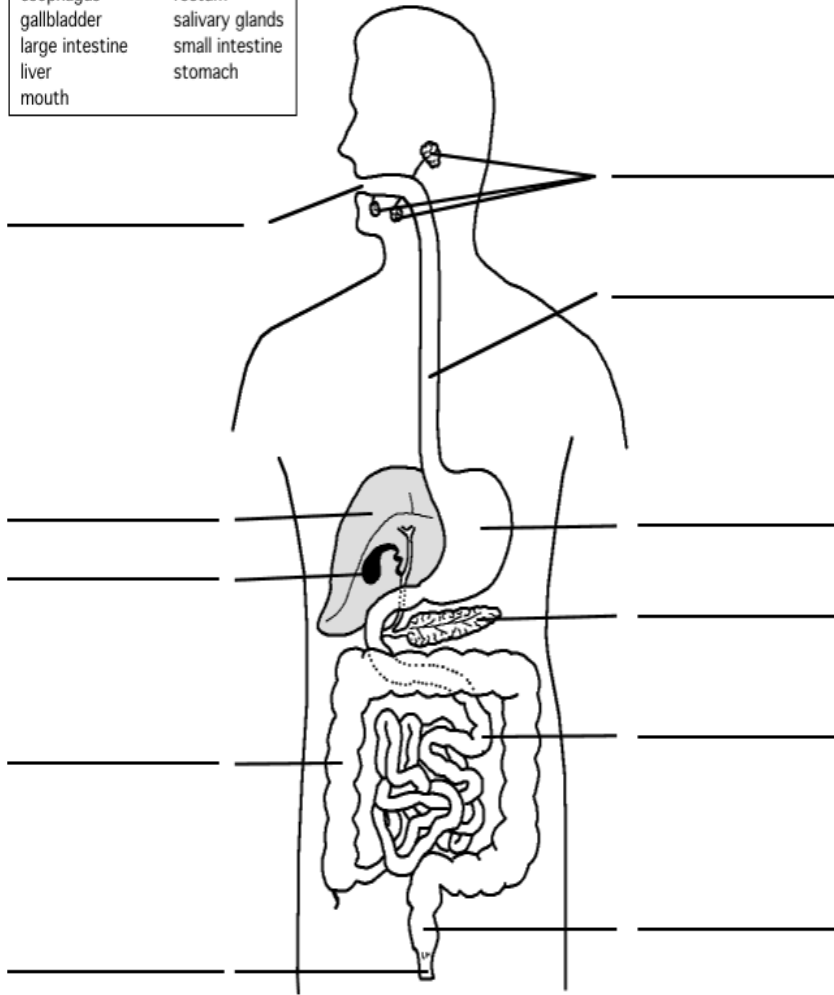
IV. What are the components of human blood?

Plasma	Red Blood Cells	White Blood Cells	Platelets

anus
 esophagus
 gallbladder
 large intestine
 liver
 mouth

pancreas
 rectum
 salivary glands
 small intestine
 stomach

©edHelper.com



Digestive System

Blood Types			
Type	Characteristics	Donates to	Receives From